

# Numerical Simulation of Pressure Surge with the Method of Characteristics

R. Fiereder

02.04.2009 Saint Petersburg, Russia

# Content

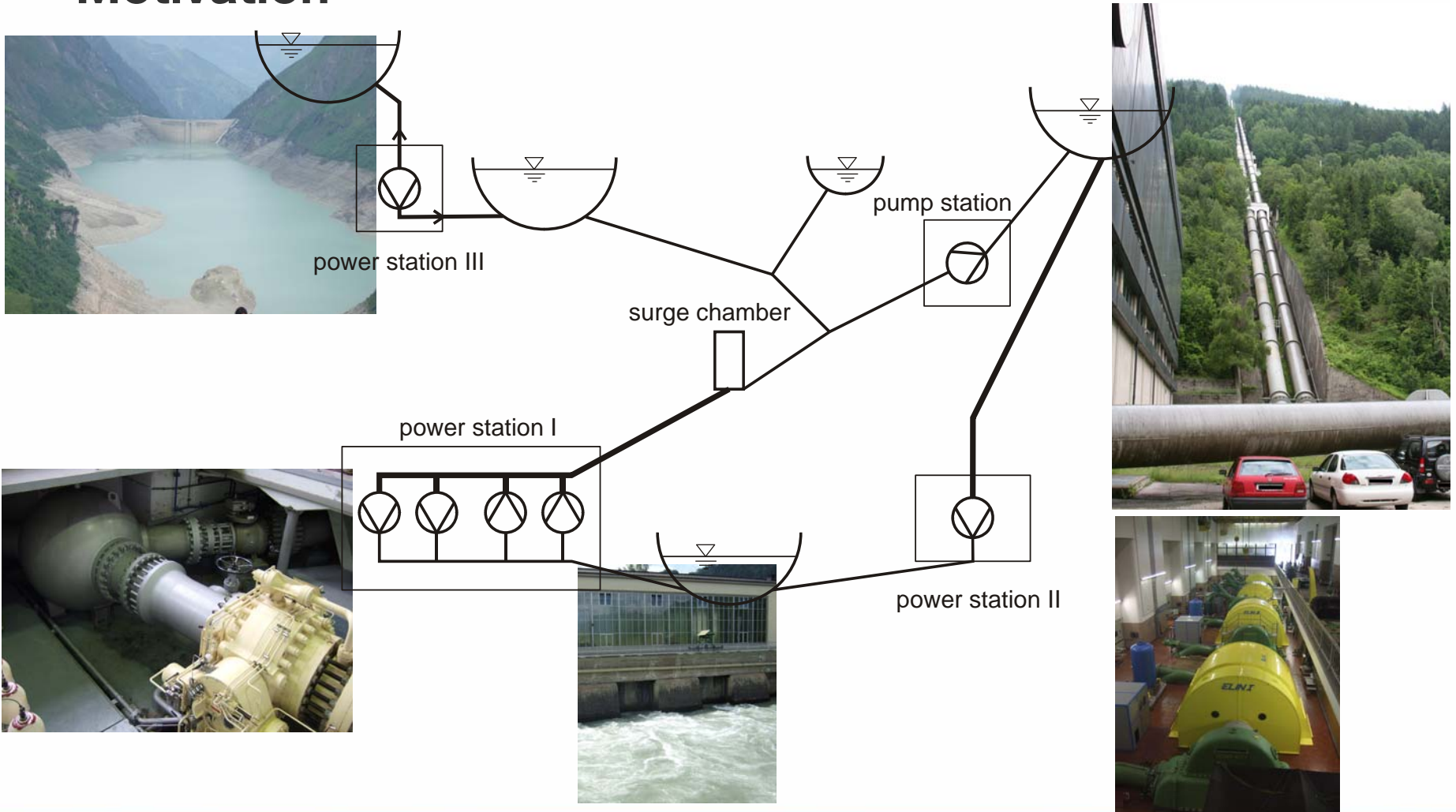
- Motivation
- Governing Equations
  - Continuity Equation
  - Momentum Equation
- Method of Characteristics
- Implementation
- Boundary Conditions
- Application
  - pressure surge
  - oscillating valve
  - surge chamber oscillations
  - power plant simulation

# Motivation

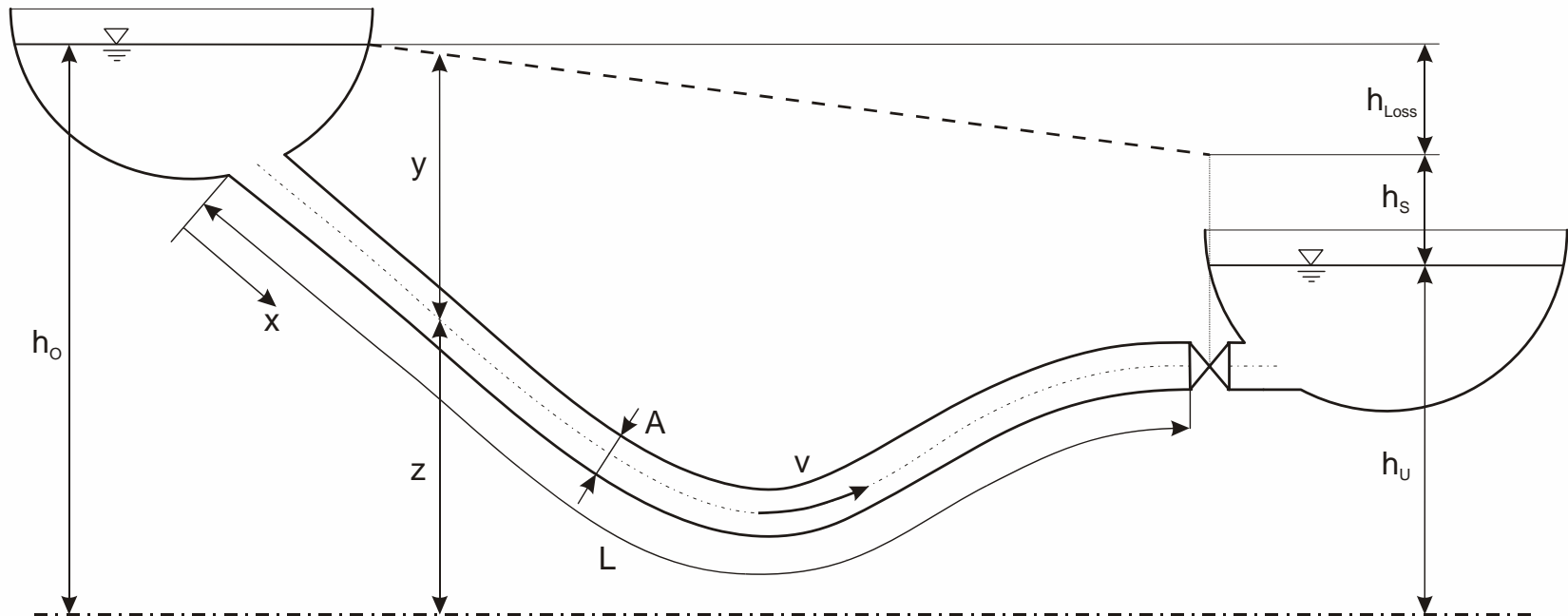
- Simulation of interaction of plant components
- Identification of resonance cases



# Motivation



# Governing Equations



- 1D
- unsteady
- compressible



- Continuity equation
- Momentum equation

## Continuity Equation

$$\frac{1}{\rho} \frac{d\rho}{dt} + \frac{1}{A} \frac{dA}{dt} + \frac{\partial v}{\partial x} = 0$$

- Continuity

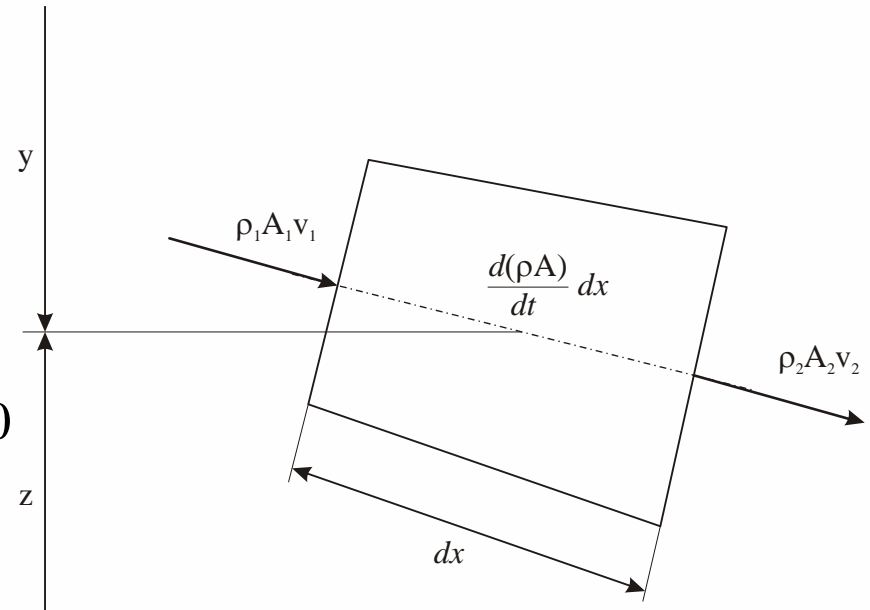
$$\frac{\partial(\rho A)}{\partial t} + \frac{\partial(\rho v A)}{\partial x} = 0$$

- Product rule

$$A \frac{\partial \rho}{\partial t} + \rho \frac{\partial A}{\partial t} + A v \frac{\partial \rho}{\partial x} + \rho v \frac{\partial A}{\partial x} + \rho A \frac{\partial v}{\partial x} = 0$$

- Total differential

$$\frac{d}{dt} = \frac{\partial}{\partial t} + \frac{dx}{dt} \frac{\partial}{\partial x}$$



## Continuity Equation

$$\frac{1}{A} \frac{dA}{dt} = \frac{2R}{E_R s} (1 - \mu^2) \frac{dp}{dt}$$

- Circular Pipe

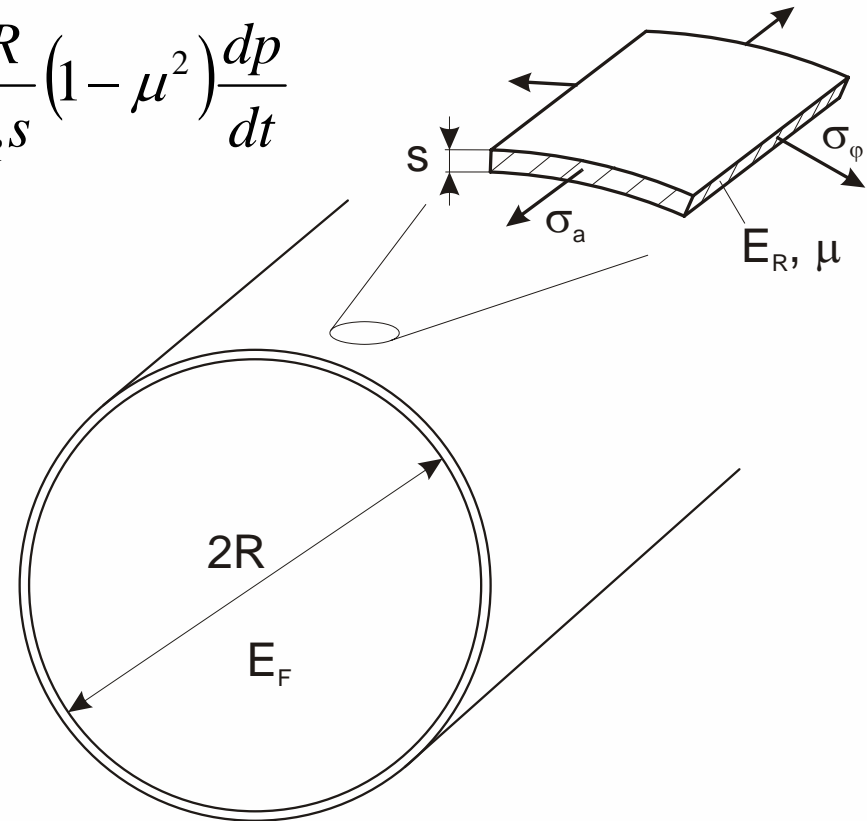
$$\frac{dA}{dt} = 2\pi R \frac{dR}{dt} \quad \frac{1}{A} \frac{dA}{dt} = 2 \frac{d\varepsilon_\varphi}{dt}$$

- No axial displacement / Hooke's law

$$\sigma_a = \mu \sigma_\varphi \quad \varepsilon_\varphi = \frac{\sigma_\varphi - \mu \sigma_a}{E_R}$$

- $s \ll R$

$$\frac{d\sigma_\varphi}{dt} \cong \frac{R}{s} \frac{dp}{dt}$$



## Continuity Equation

$$\frac{1}{\rho} \frac{d\rho}{dt} = \frac{1}{E_F} \frac{dp}{dt}$$

- Fluid compressibility
  - Hooke's law applies

$$E_F = \frac{dp}{dV/V}$$

- Mass in Control Volume is constant

$$dm = Vd\rho + \rho dV = 0$$

$$\frac{dV}{V} = -\frac{d\rho}{\rho}$$



## Continuity Equation

$$\frac{\partial p}{\partial t} + v \frac{\partial p}{\partial x} + \rho a^2 \frac{\partial v}{\partial x} = 0$$

$$\frac{dp}{dt} \underbrace{\left[ \frac{1}{E_F} + \frac{2R}{E_{RS}} (1 - \mu^2) \right]}_{\frac{1}{E_{Sys}}} + \frac{\partial v}{\partial x} = 0$$

$$a^2 = \frac{E_{Sys}}{\rho}$$

## Momentum Equation

$$\frac{1}{\rho} \frac{\partial p}{\partial x} + g \frac{\partial z}{\partial x} + gJ_e + v \frac{\partial v}{\partial x} + \frac{\partial v}{\partial t} = 0$$

- Momentum conservation

$$\sum_i F_i = \frac{dI}{dt}$$

- Pressure force

$$F_p = -A \frac{\partial p}{\partial x} dx$$

- Gravity force

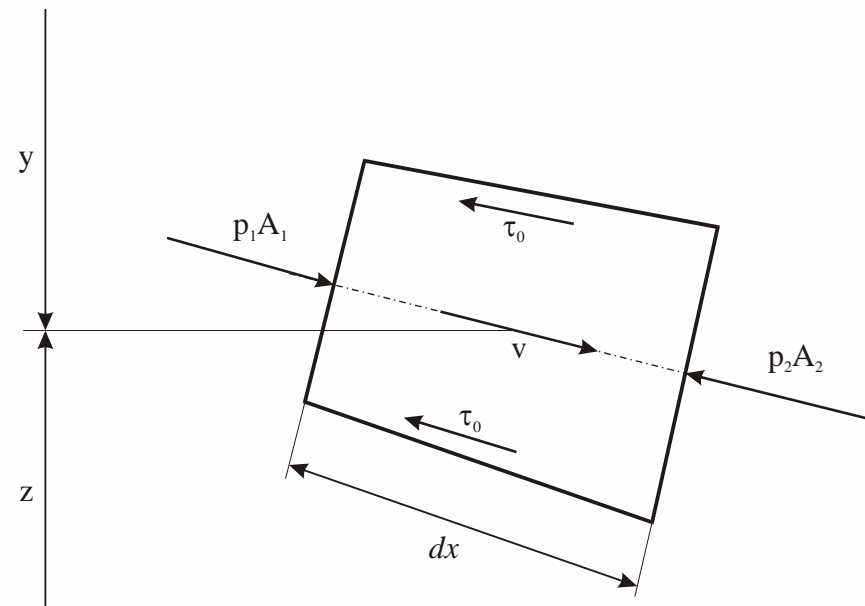
$$F_g = -\rho g A \frac{\partial z}{\partial x} dx$$

- Friction force

$$F_\tau = -2\pi R \tau_0 dx$$

$$\tau_0 = -\frac{\rho \lambda |v| v}{8}$$

$$\lambda = -\frac{4J_e g R}{v^2}$$



## Final Set of Equations

$$\frac{\partial p}{\partial t} + v \frac{\partial p}{\partial x} + \rho a^2 \frac{\partial v}{\partial x} = 0$$

$$\frac{1}{\rho} \frac{\partial p}{\partial x} + g \frac{\partial z}{\partial x} + g J_e + v \frac{\partial v}{\partial x} + \frac{\partial v}{\partial t} = 0$$

- First order hyperbolic differential equation system
- Two dependent variables  $p$ ,  $v$
- Two independent variables  $x$ ,  $t$
- $a$ ,  $\rho$ ,  $J_e$  are parameters of the system
- Solution by means of Method of Characteristics

# Method of Characteristics

- Hyperbolic differential equation system
  - Interferences propagate at a certain speed
  - Existence of constant variables along characteristic lines :

$$\left. \frac{d}{dt} R^\pm \right|_{C^\pm} = 0$$

Riemann Variables

$$\frac{\partial p}{\partial t} + v \frac{\partial p}{\partial x} + \rho a^2 \frac{\partial v}{\partial x} = G_1 = 0$$

$$\frac{1}{\rho} \frac{\partial p}{\partial x} + g \frac{\partial z}{\partial x} + g J_e + v \frac{\partial v}{\partial x} + \frac{\partial v}{\partial t} = G_2 = 0$$

$$G = G_2 + \xi G_1$$

$$\left[ \frac{\partial v}{\partial t} + \left( v + \xi \rho a^2 \right) \frac{\partial v}{\partial x} \right] + \xi \left[ \frac{\partial p}{\partial t} + \left( v + \frac{1}{\rho \xi} \right) \frac{\partial p}{\partial x} \right] = 0$$

$$\frac{dv}{dt} + \xi \frac{dp}{dt} + g \left( J_e + \frac{\partial z}{\partial x} \right) = 0$$

$$\frac{dx}{dt} = v + \xi \rho a^2 = \frac{1}{\rho \xi}$$

$$\xi = \pm \frac{1}{\rho a}$$

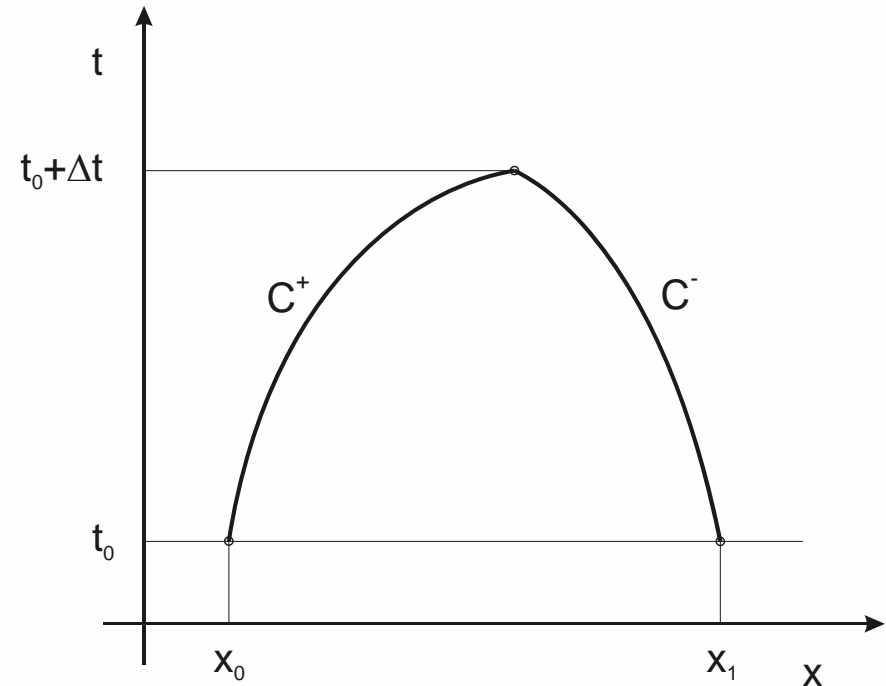
## Method of Characteristics

$$\frac{dv}{dt} + \frac{1}{\rho a} \frac{dp}{dt} + g \left( J_e + \frac{\partial z}{\partial x} \right) = \frac{d}{dt} R^+ = 0$$

$$C^+ = \frac{dx}{dt} = v + a$$

$$\frac{dv}{dt} - \frac{1}{\rho a} \frac{dp}{dt} + g \left( J_e + \frac{\partial z}{\partial x} \right) = \frac{d}{dt} R^- = 0$$

$$C^- = \frac{dx}{dt} = v - a$$



## Method of Characteristics

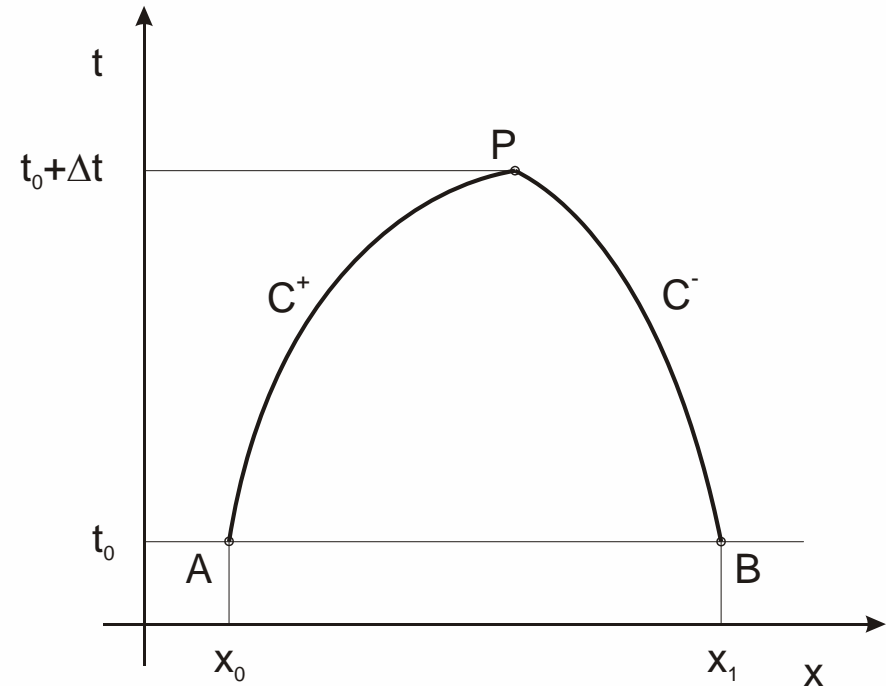
- Calculate values in P from known values in Point A and B

- Integrate  $R^\pm$  along  $C^\pm$

$$\int_A^P dv + \frac{1}{\rho a} \int_A^P dp + g \int_A^P J_e dt + g \int_A^P \frac{\partial z}{\partial x} dt = 0$$

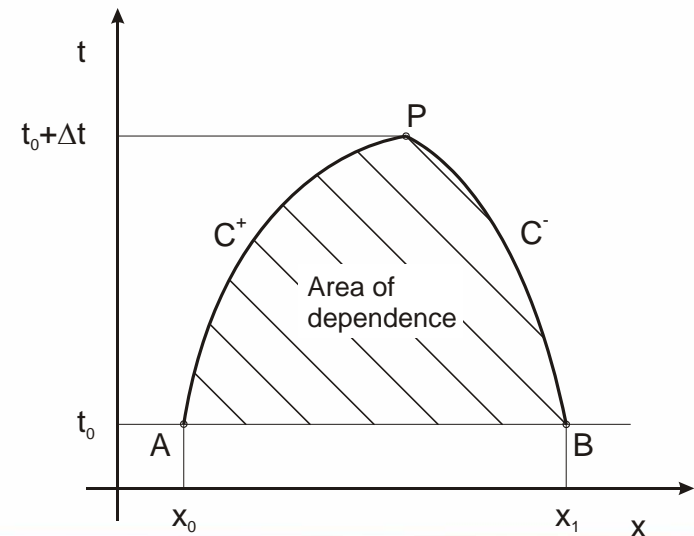
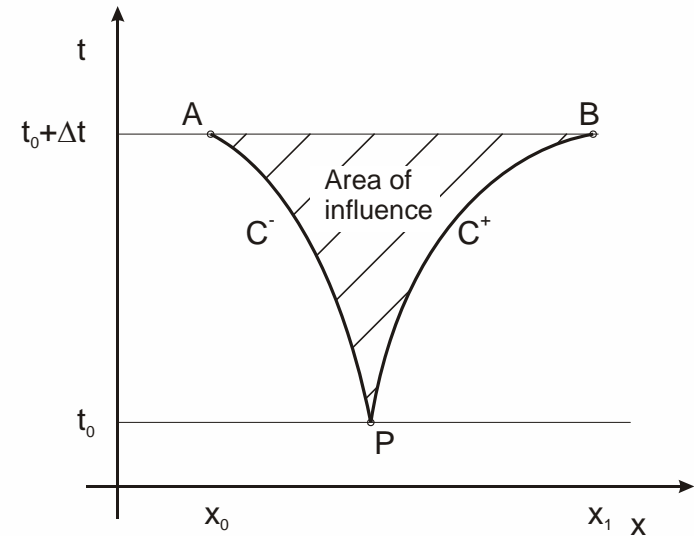
$$\int_B^P dv - \frac{1}{\rho a} \int_B^P dp + g \int_B^P J_e dt + g \int_B^P \frac{\partial z}{\partial x} dt = 0$$

- Two equations for two unknown variables



## Method of Characteristics-Summary

- Solution is only valid on Characteristics
- Area of influence
- Area of dependence
- Characteristics separate two different solution domains



# Implementation

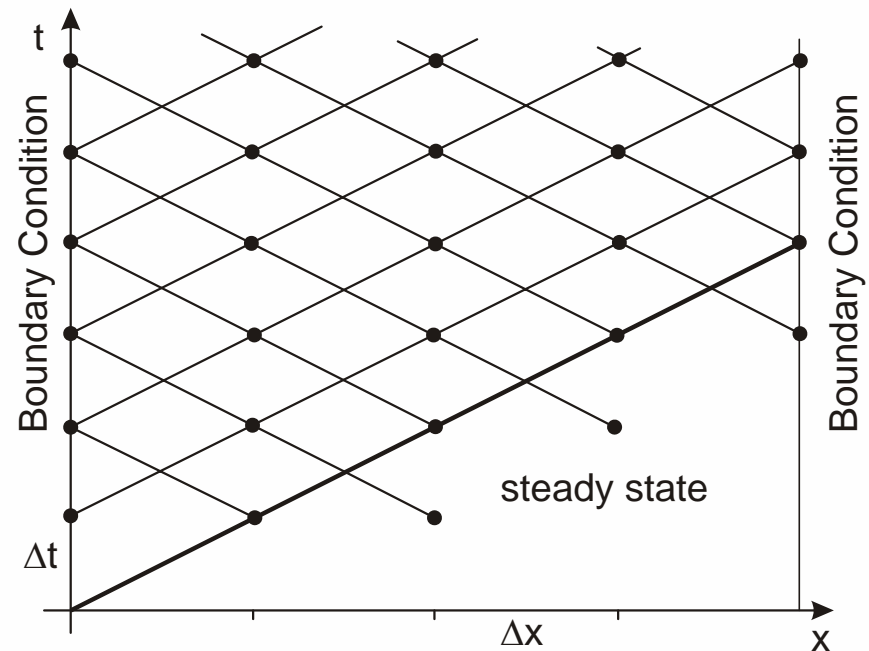
- Simplifications

- $a \gg v$
- $C^- = \frac{dx}{dt} = a \longrightarrow$  straight lines,  
 $\Delta x = a\Delta t$
- velocity  $v$  is not known along  $C$   
-> Friction term has to be approximated

$$\int_A^P J_e dt = J \int v^2 dt \cong J v_A |v_A| \Delta t + O(\Delta t) = J_{e,A} \Delta t$$

- Required

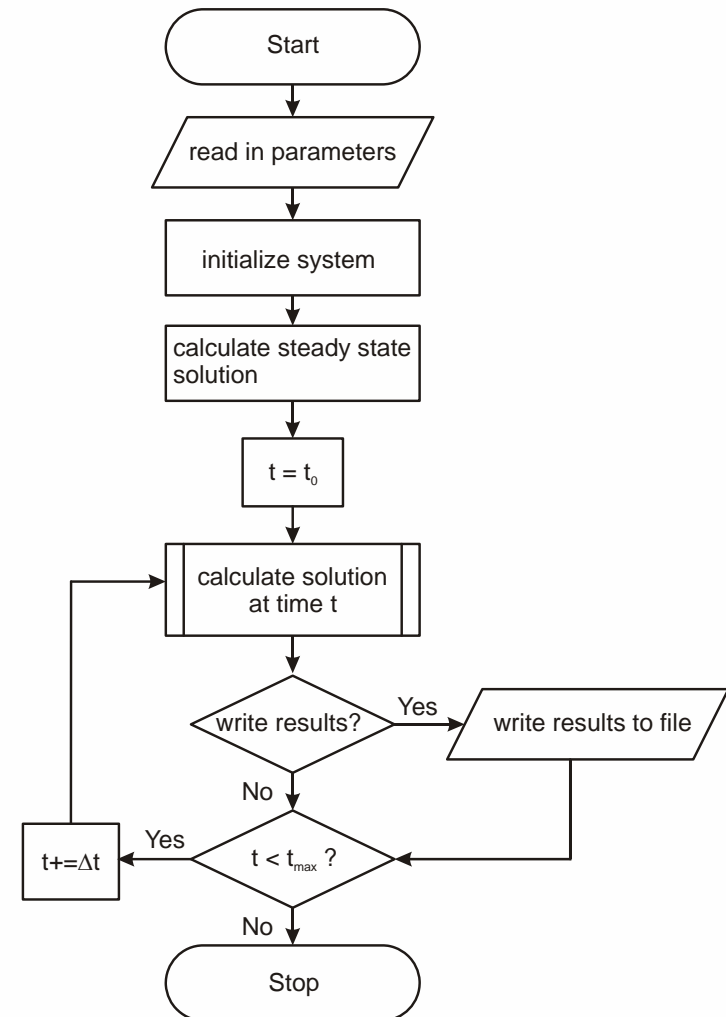
- Computational grid
- Steady-state solution for the system
- Boundary condition providing a disturbance





# Implementation

- Get system parameters
- Initialize system
  - Calculate Wave velocity  $a$
  - Generate calculation grid
- Calculate steady state solution
  - Stationary Hydraulics
- Calculate solution for time  $t$



## Implementation

- Method for calculating new time level

– C<sup>+</sup>

$$(v_P - v_A) + \frac{1}{\rho a} (p_P - p_A) + gJ_{e,A} \Delta t = 0$$

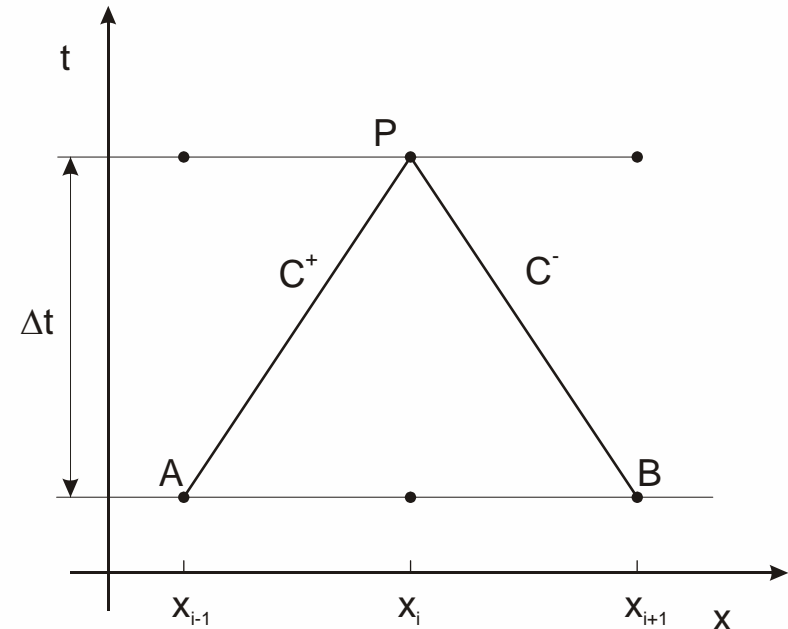
$$v_P + \frac{1}{\rho a} p_P - v_A - \underbrace{\frac{1}{\rho a} p_A}_{K_A^+} + gJ_{e,A} \Delta t = 0$$

– C<sup>-</sup>

analog

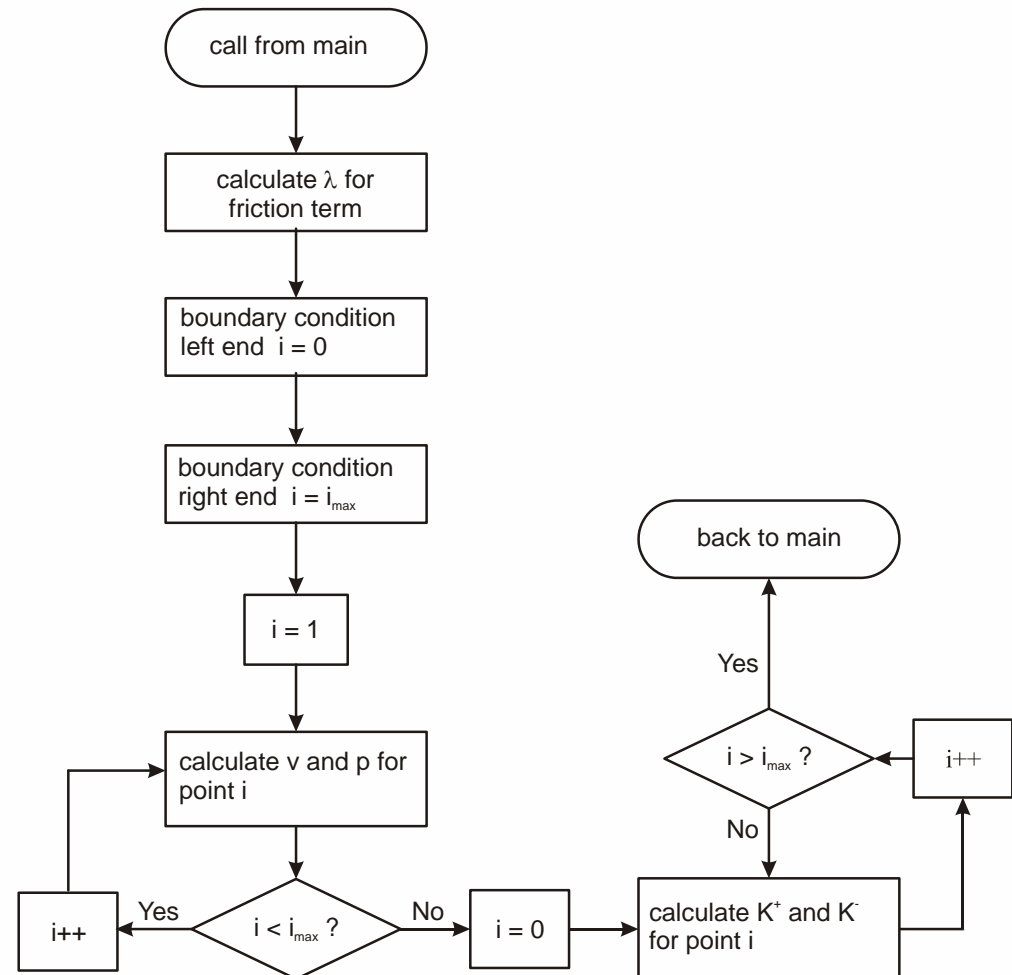
$$v_P = \frac{K_B^- - K_A^+}{2}$$

$$p_P = -\frac{\rho a (K_B^- + K_A^+)}{2}$$



## Implementation

- Calculate  $\lambda$
- Evaluate boundary condition
- Calculate solution for inner field
- Calculate  $K^+$  and  $K^-$



# Boundary Conditions

- Static

- passive → Reservoir
- active → Valve

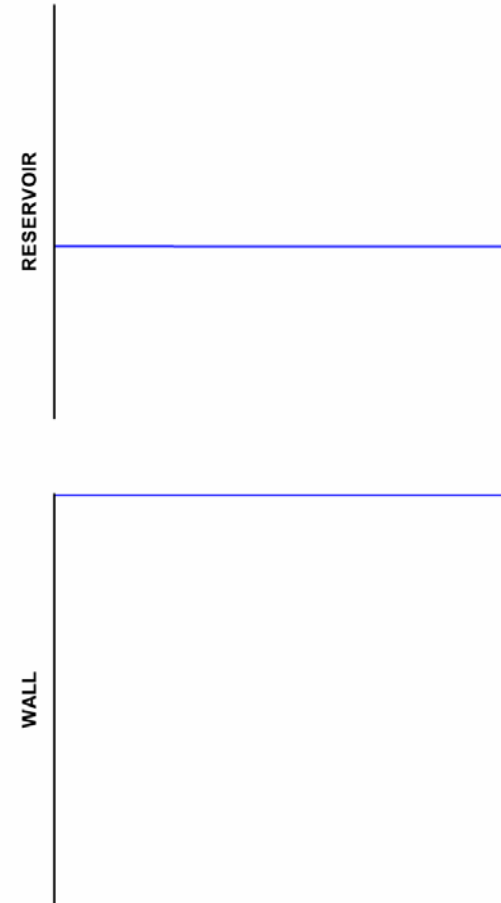
- Dynamic

- passive → surge chamber
- active → Francis Turbine

	passive	active
static	$f(p, v)$	$f(p, v, t)$
dynamic	$f\left(p, \frac{dp}{dt}, v, \frac{dv}{dt}\right)$	$f\left(p, \frac{dp}{dt}, v, \frac{dv}{dt}, t\right)$

## Boundary Conditions

- Reservoir
  - $p = \text{const.}$   $\longrightarrow$   $v$  is calculated
  - compression waves are reflected as expansions waves
  - expansions waves are reflected as compression waves
  
- Wall
  - $v = 0$   $\longrightarrow$   $p$  is calculated
  - waves are reflected



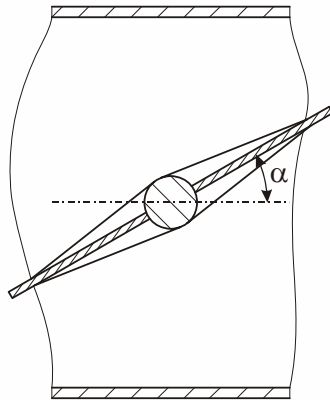
## Boundary Conditions

- Valve

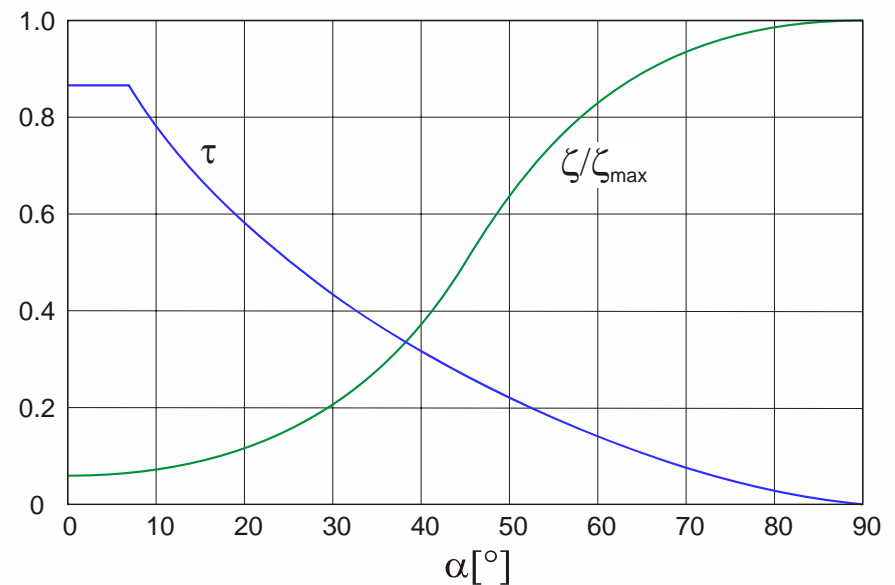
- $v = f(\Delta p, \tau, \zeta)$

- $\zeta \rightarrow$  loss coefficient

- $\tau = \frac{A_{valve}}{A_{pipe}}$

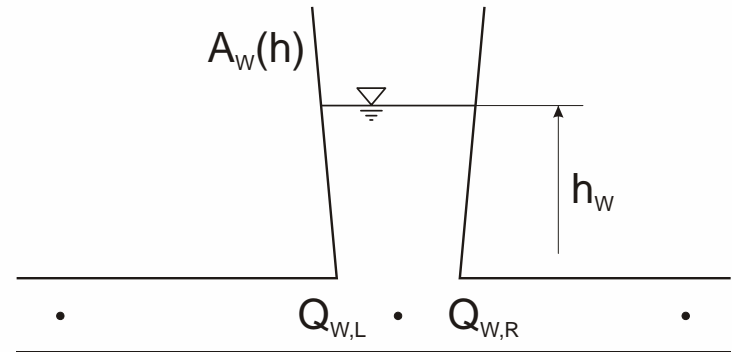


$$v_1 = \zeta \tau \sqrt{\frac{2}{\rho} \cdot |p_0 - p_1|}$$



## Boundary Conditions

- Surge chamber
  - $p_w$  can not be computed directly  
 $Q_w(h_w, \dots)$
  - ↓
  - predictor corrector scheme
    - guess for  $p_w$
    - calculate  $Q_w$
    - correct  $p_w$
    - correct  $Q_w$  } iterate till convergence

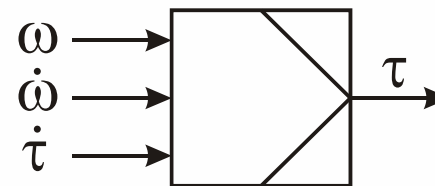
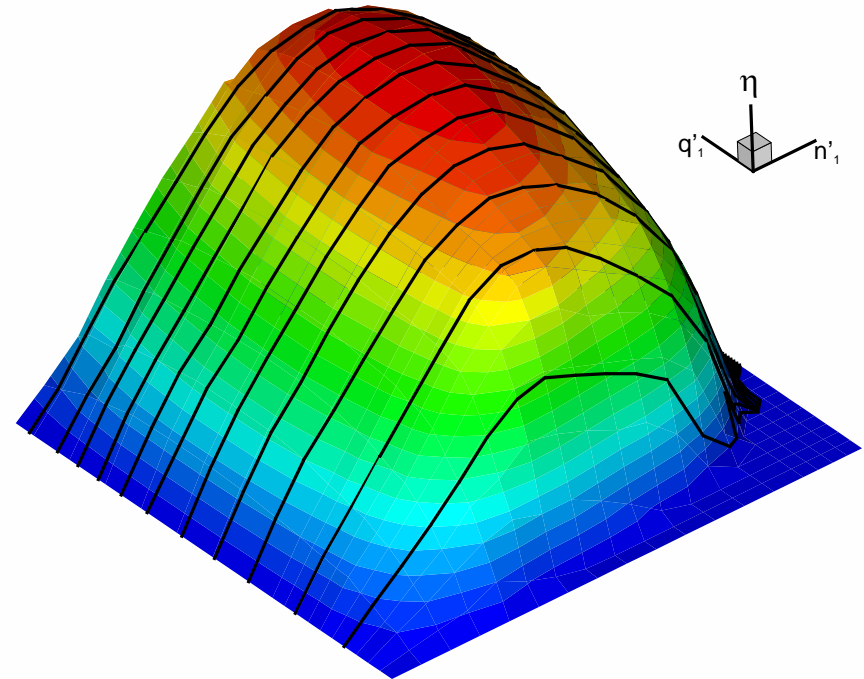


$$\frac{dh}{dt} = \frac{1}{A_w(h)} (Q_{w,L} - Q_{w,R})$$

$$\Delta h_w = h_{w,t_0+\Delta t} - h_{w,t_0}$$

## Boundary Conditions

- Turbine
  - Machine data
    - Mass moment of inertia of machine and rotating fluid
    - Hill chart
    - Generator
  - Governor
  - Power Grid

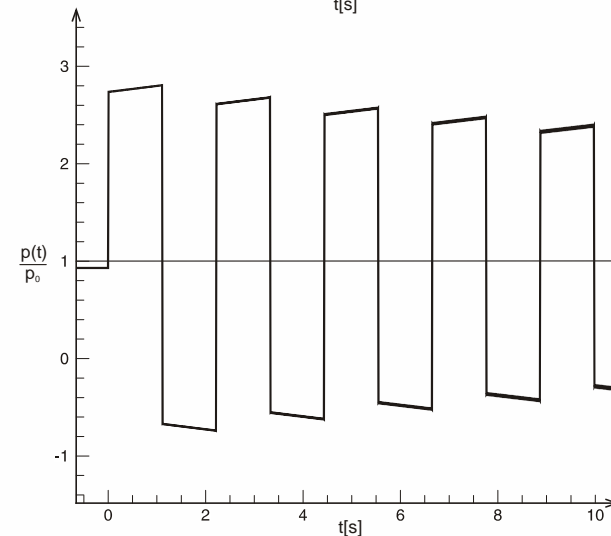
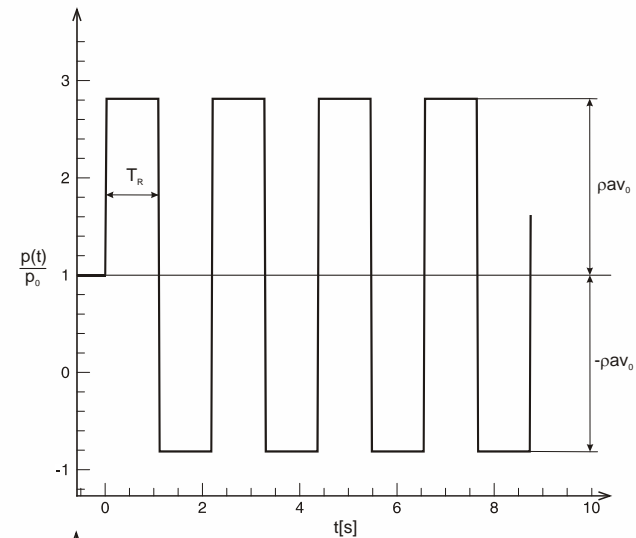




# Application

## PRESSURE SURGE

- Joukowski - pressure surge ( Жуковский )
  - sudden closure of a Valve
  - kinetic energy of fluid is converted in pressure



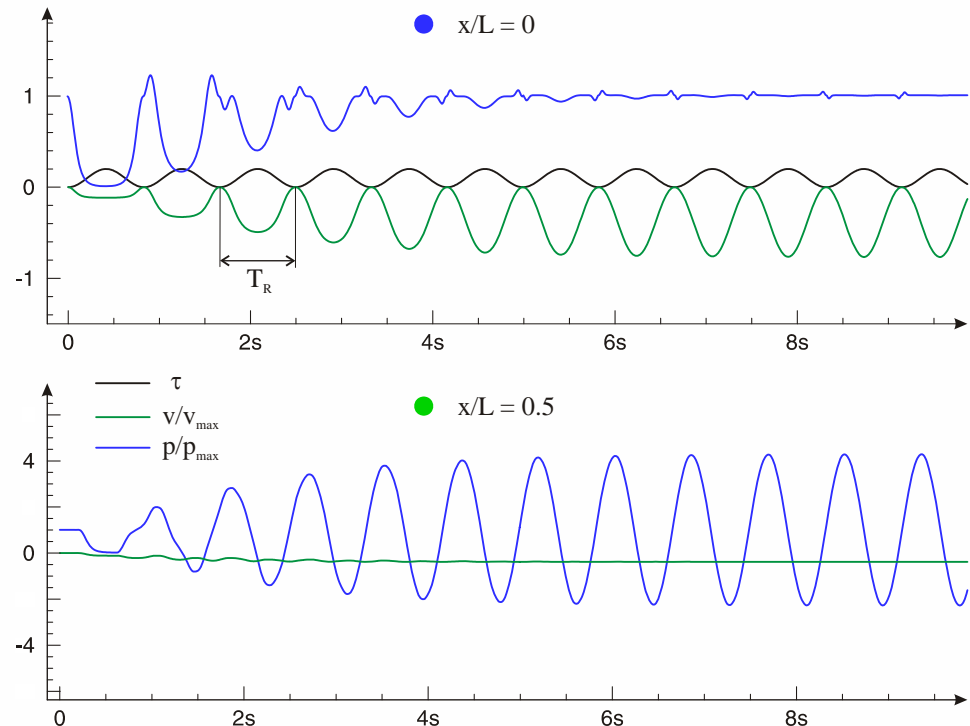
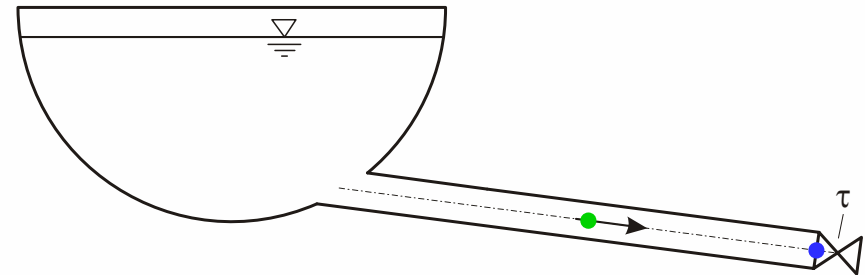
# Application

## OSCILLATING VALVE $T_\tau = T_R$

- Results

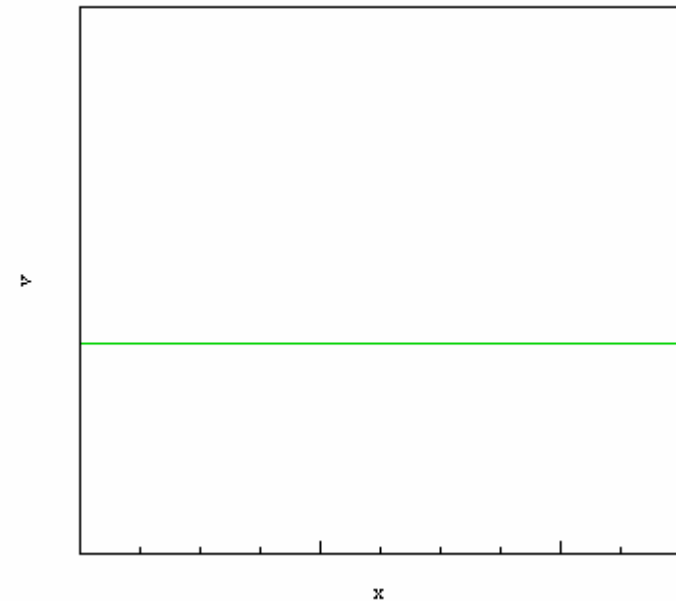
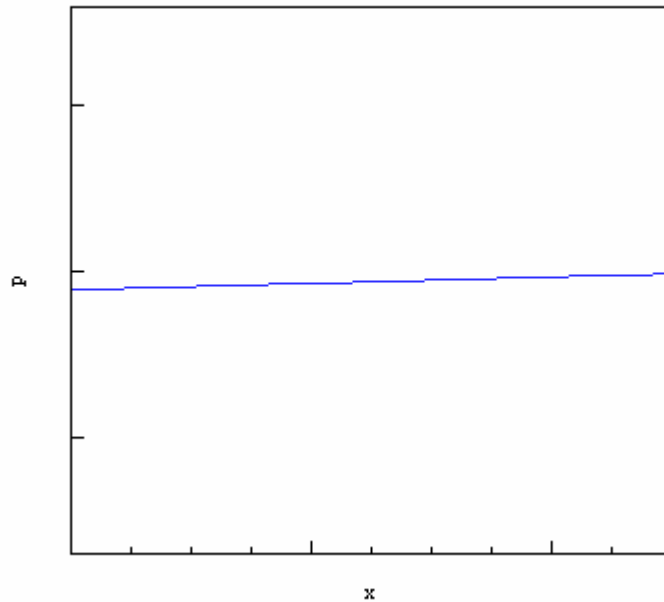
- pressure and velocity in time at the valve ●
- pressure and velocity in time in middle of the pipe ●

$$\tau = \frac{A_{valve}}{A_{pipe}}$$



# Application

OSCILLATING VALVE  $T_\tau = 2T_R$

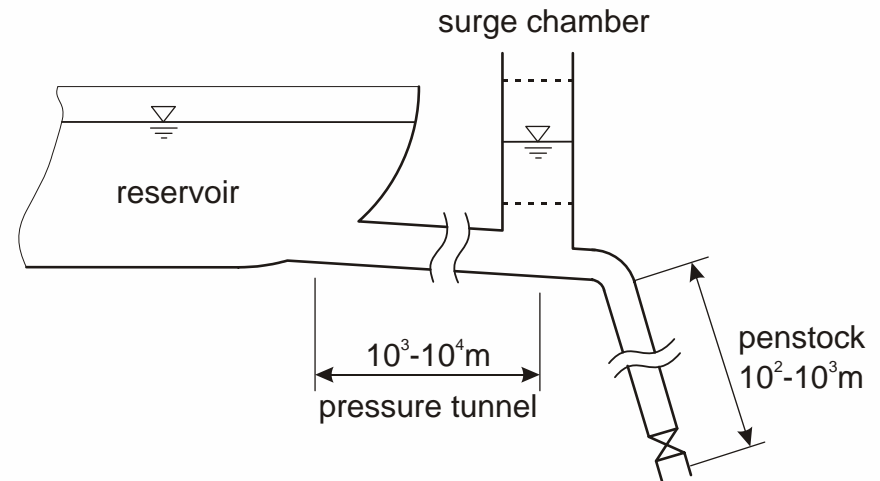


- Pressure and velocity variation along pipe
- $T_\tau = 2T_R$

# Application

## SURGE CHAMBER OSCILLATION

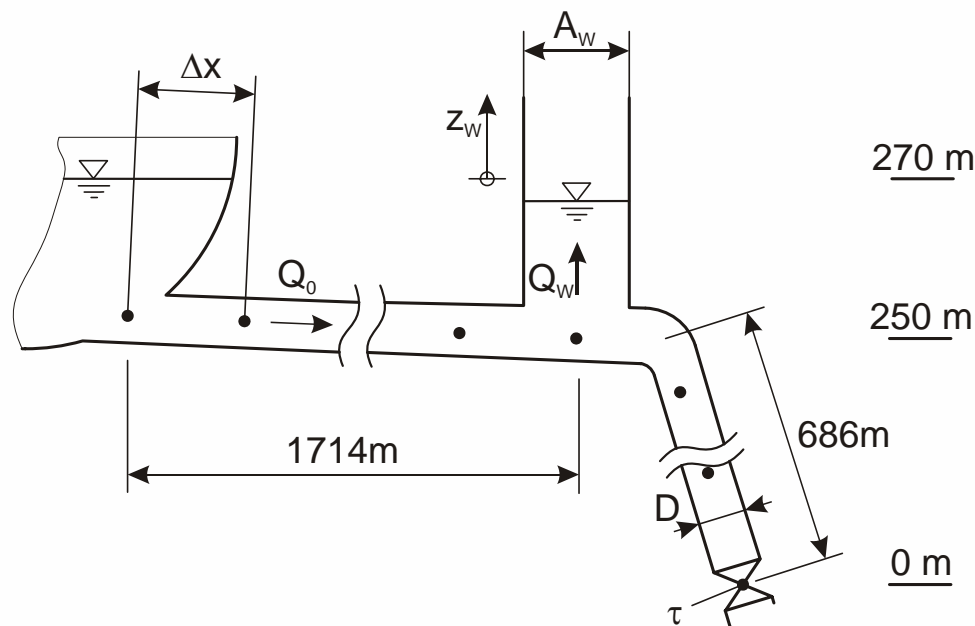
- surge chamber
  - reduces pressure fluctuations
  - hydraulic uncoupling of pressure tunnel from penstock
  - Improvement of control
  
- surge chamber oscillation
  - Interaction of high frequent pressure waves and low frequent inertia waves



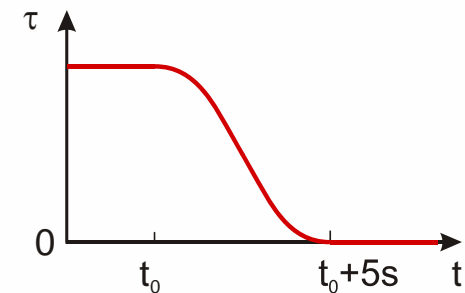
# Application

## SURGE CHAMBER OSCILLATION

- Model



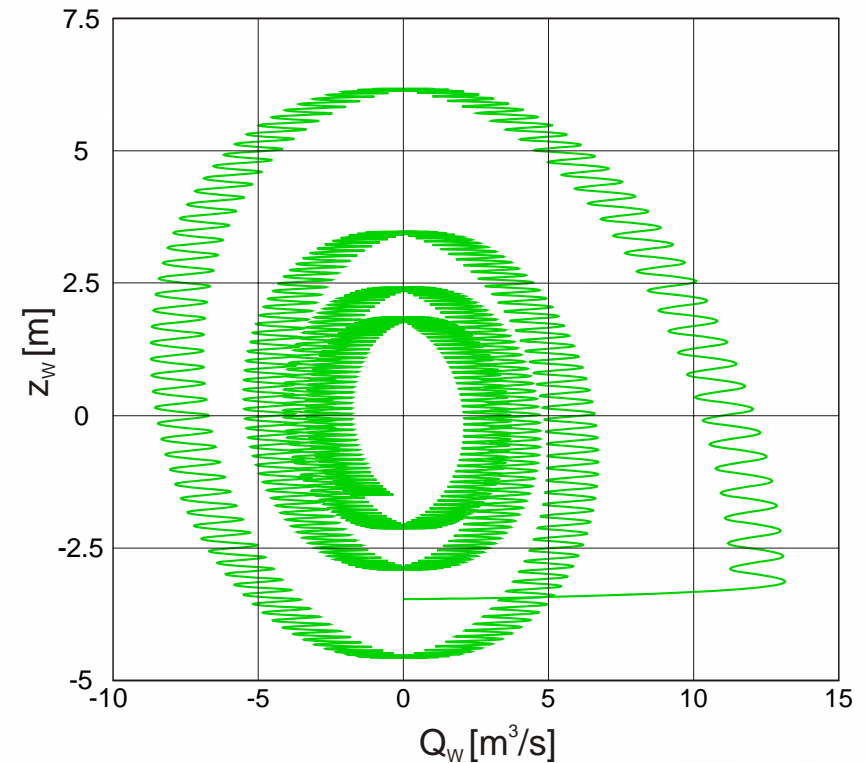
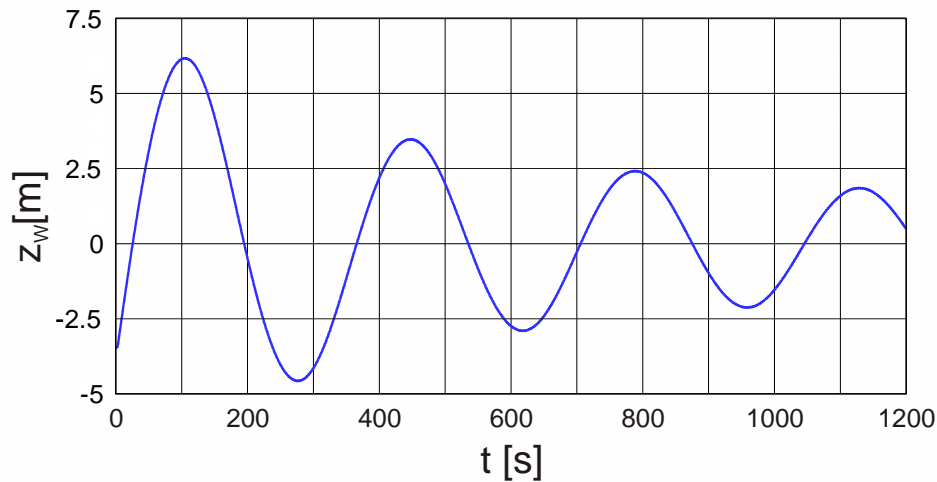
$$\begin{aligned}\Delta x &= 137.2 \quad [\text{m}] \\ \Delta t &= 0.14263 \quad [\text{s}] \\ a &= 961.92 \quad [\text{m/s}] \\ A_w &= 79.0 \quad [\text{m}^2] \\ D &= 2.5 \quad [\text{m}] \\ Q_0 &= 12.25 \quad [\text{m}^3/\text{s}]\end{aligned}$$



# Application

## SURGE CHAMBER OSCILLATION

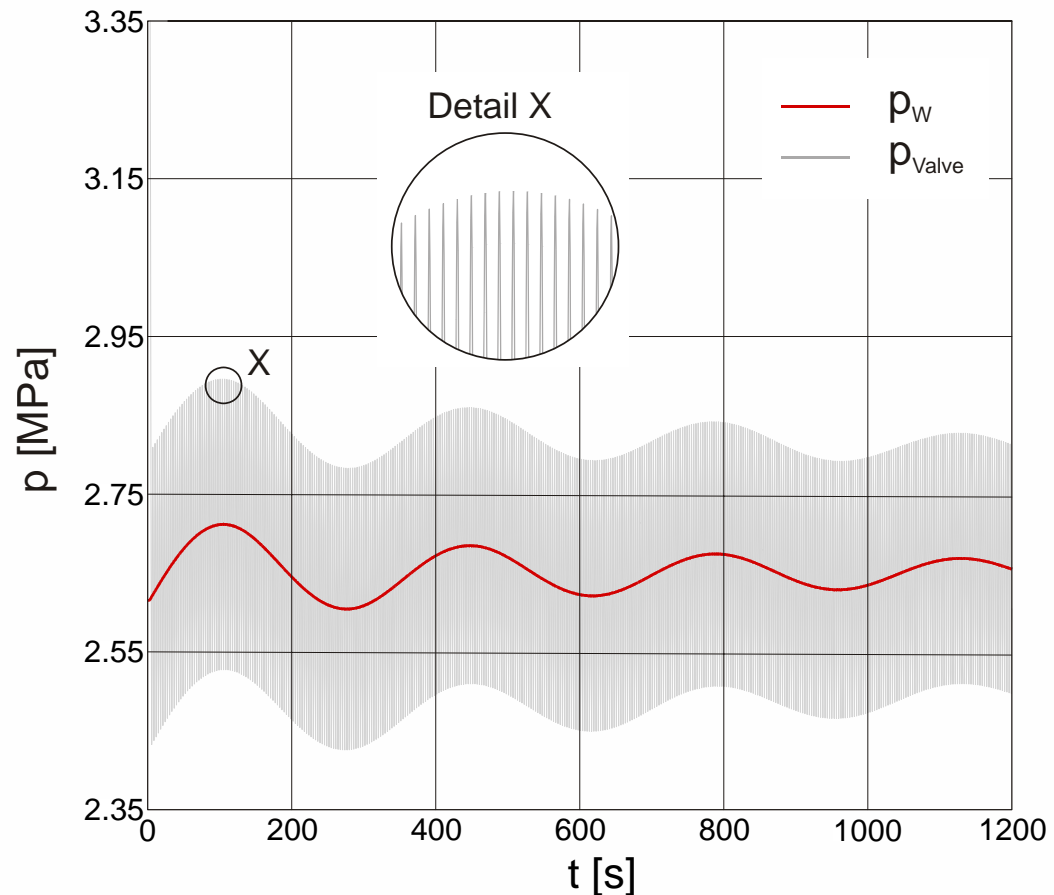
- Results
  - Elevation of surge chamber water surface
  - Zustandsdiagramm



# Application

## SURGE CHAMBER OSCILLATION

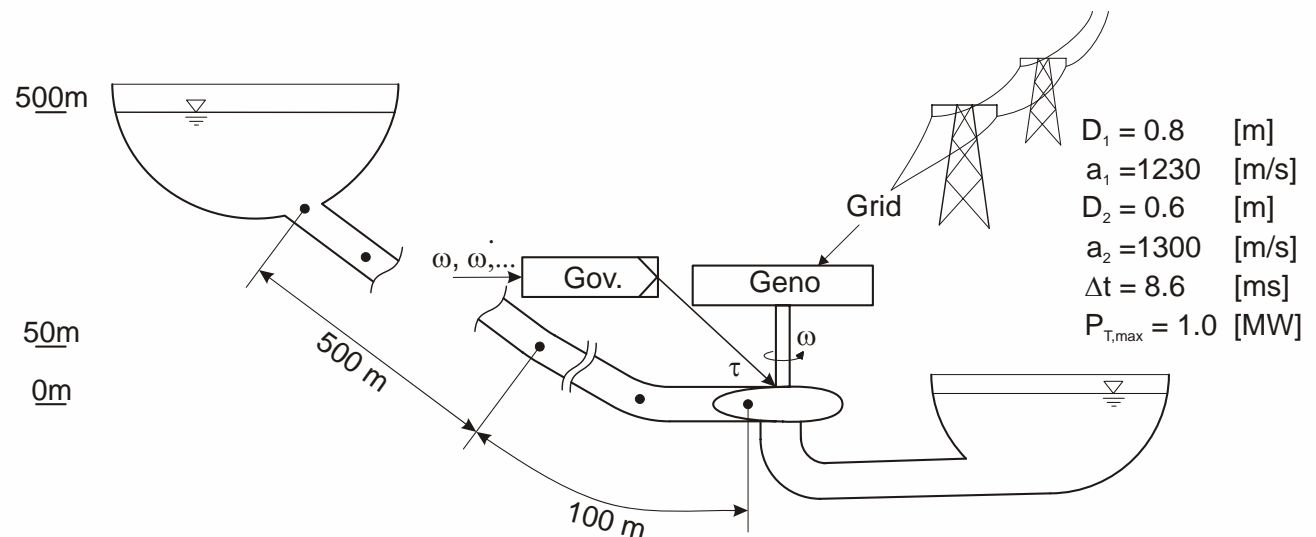
- Results
  - pressure at the lower end of the penstock
  - pressure at the **upper** end of the penstock



# Application

## POWER PLANT

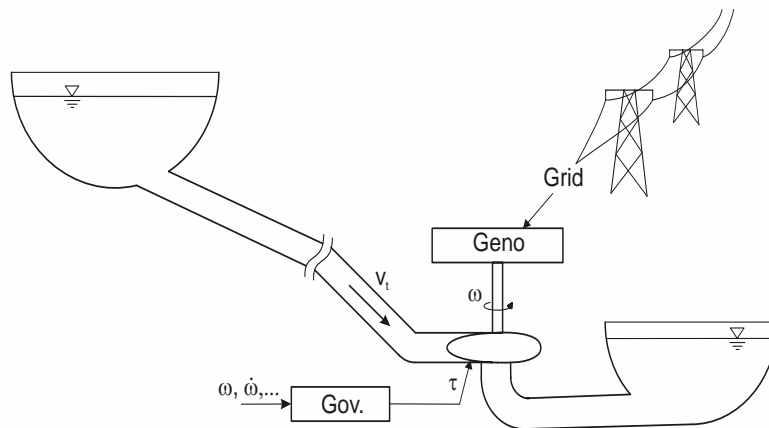
- Model
  - Simulation of plant, governor, grid and machine
  - Francis turbine
  - Isolated grid



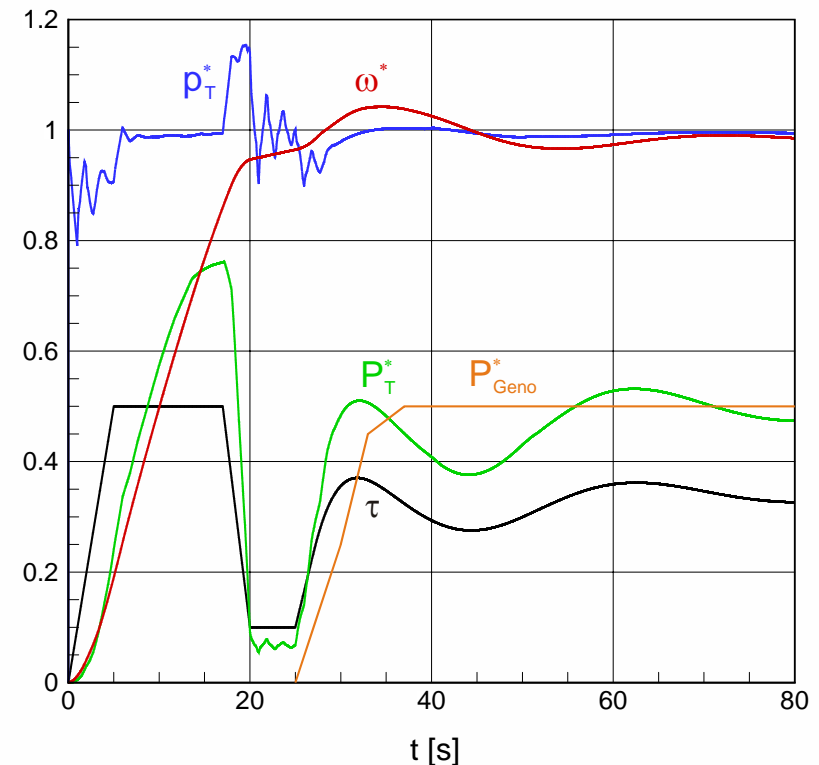


# Application

## POWER PLANT

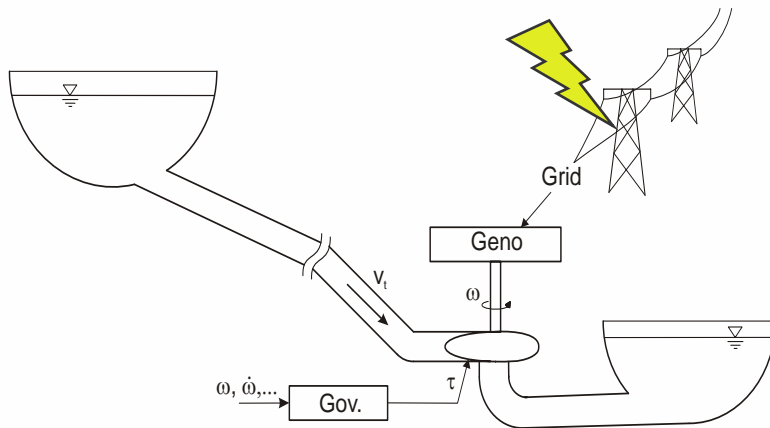


- start up
  - open loop control to overcome mass moment of inertia
  - synchronization
  - closed loop control by governor

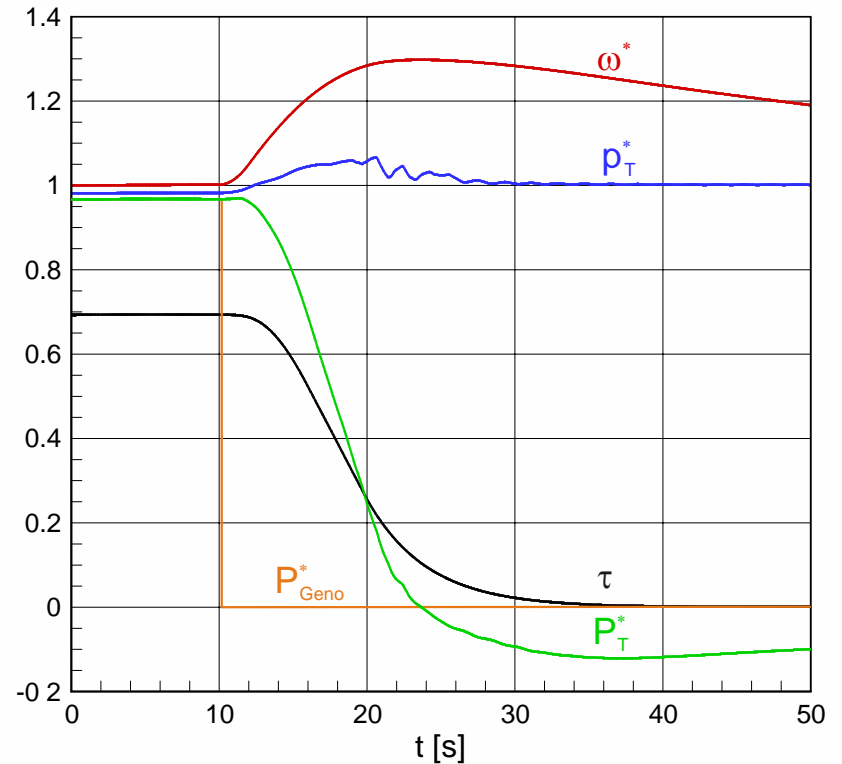


# Application

## POWER PLANT



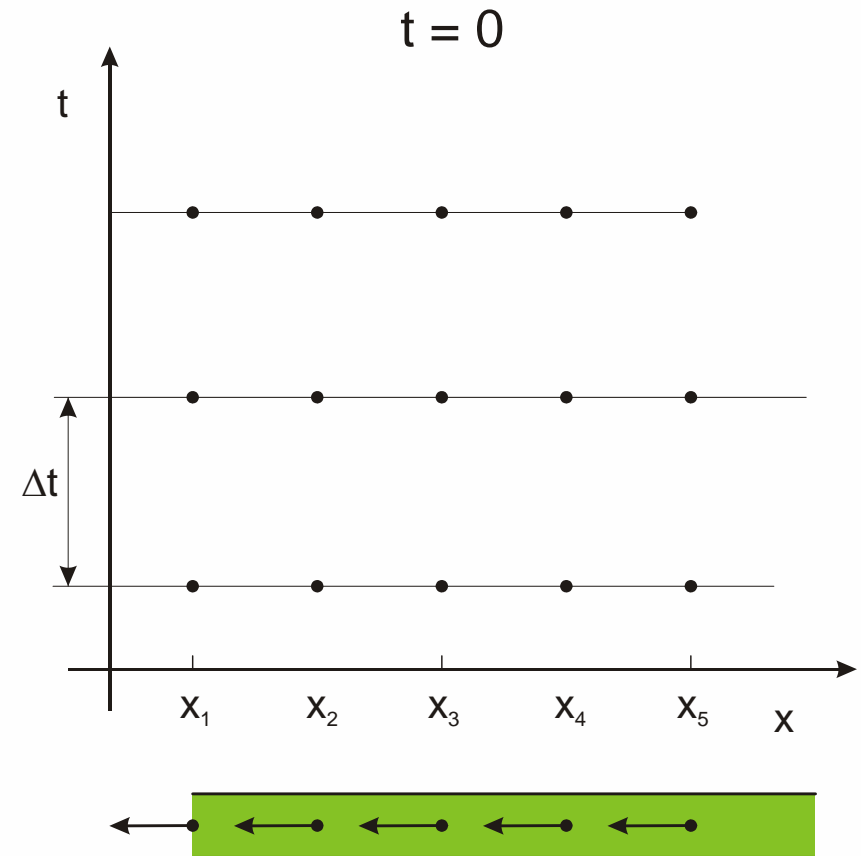
- load rejection
  - Sudden load rejection caused by failure in grid or generator



**Thank you for your  
attention!**

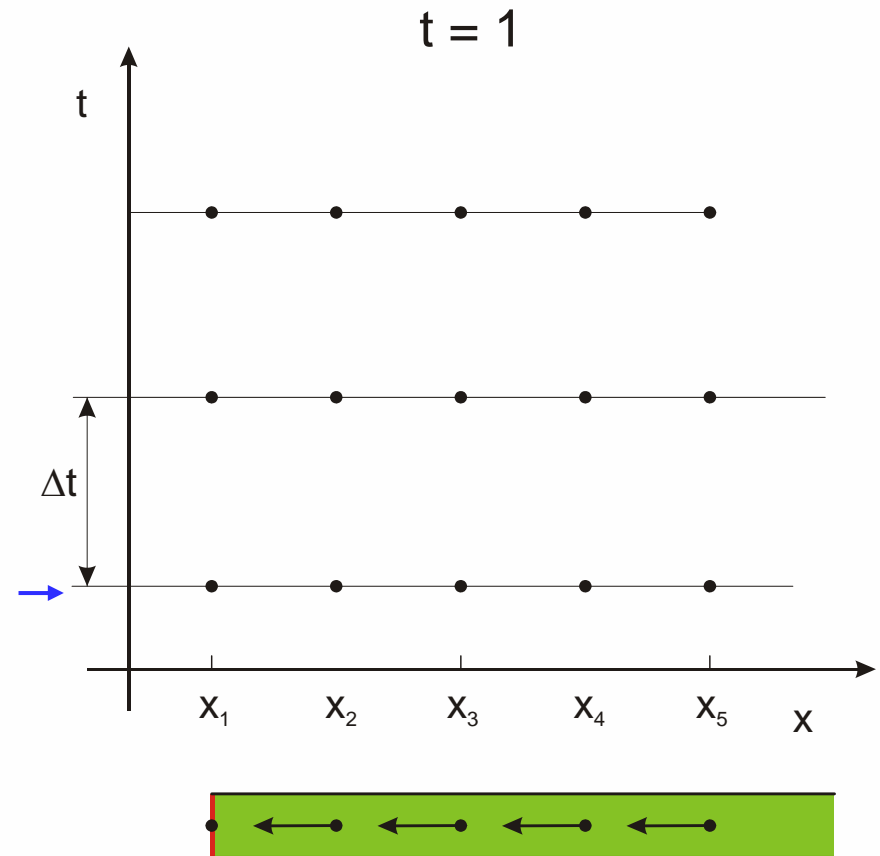
## Implementation

- Method for calculating new time level
  - Initial solution
  - constant velocity
  - low pressure



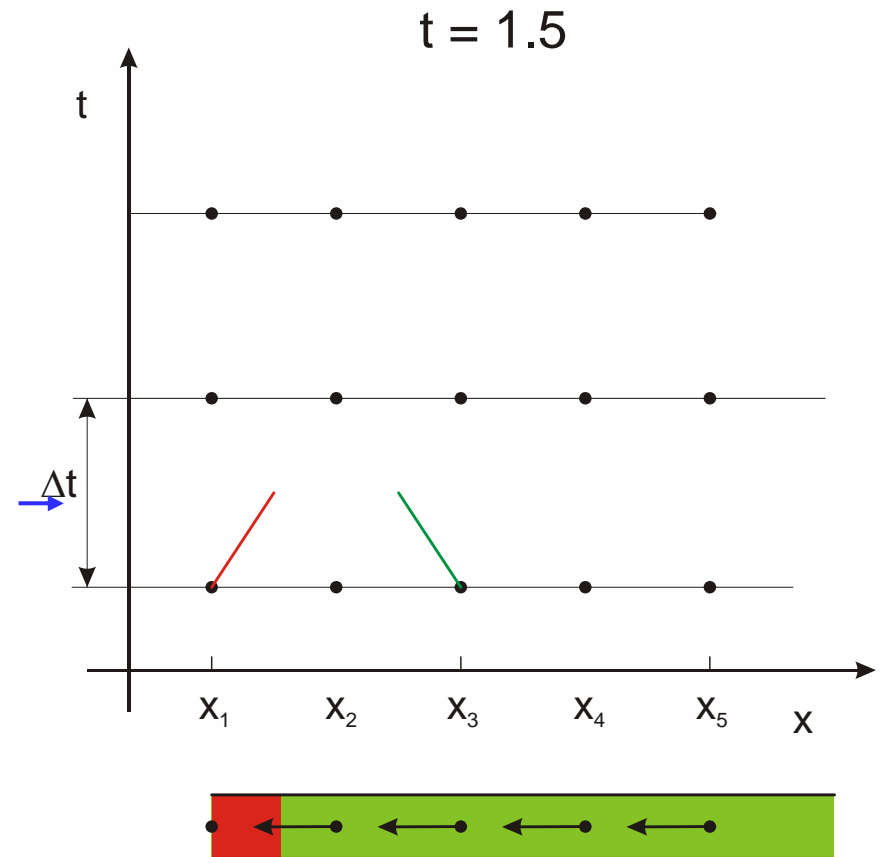
## Implementation

- Method for calculating new time level
  - valve closes suddenly



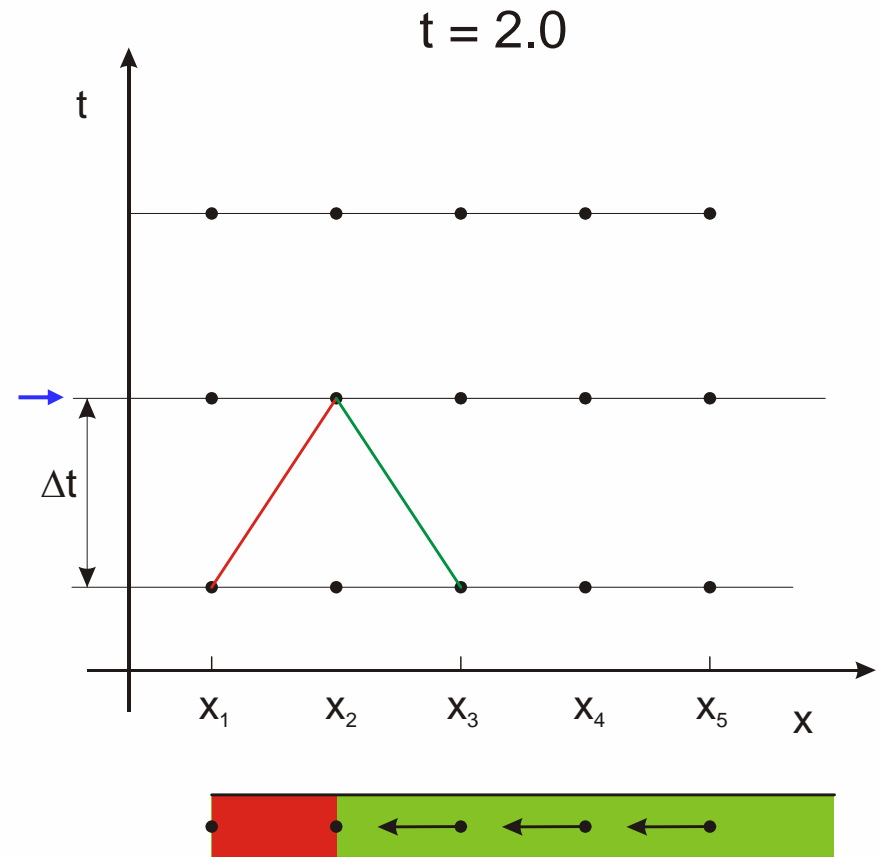
## Implementation

- Method for calculating new time level
  - disturbance propagates upstream
  - half time step



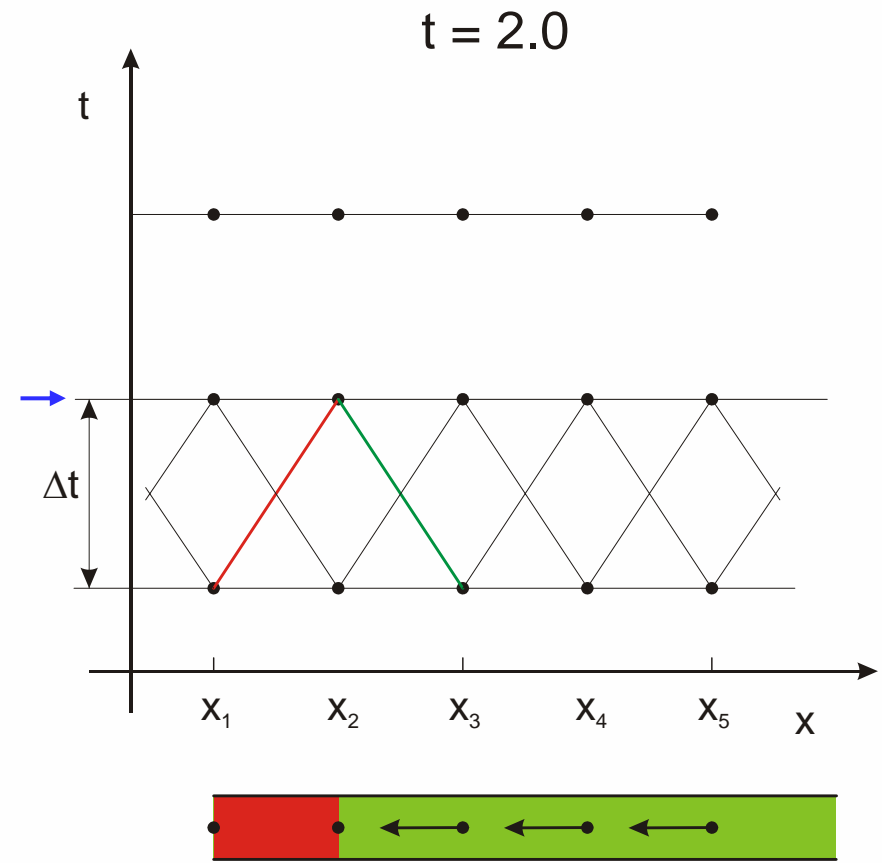
## Implementation

- Method for calculating new time level
  - Next time level
  - calculate solution on intersection Point



# Implementation

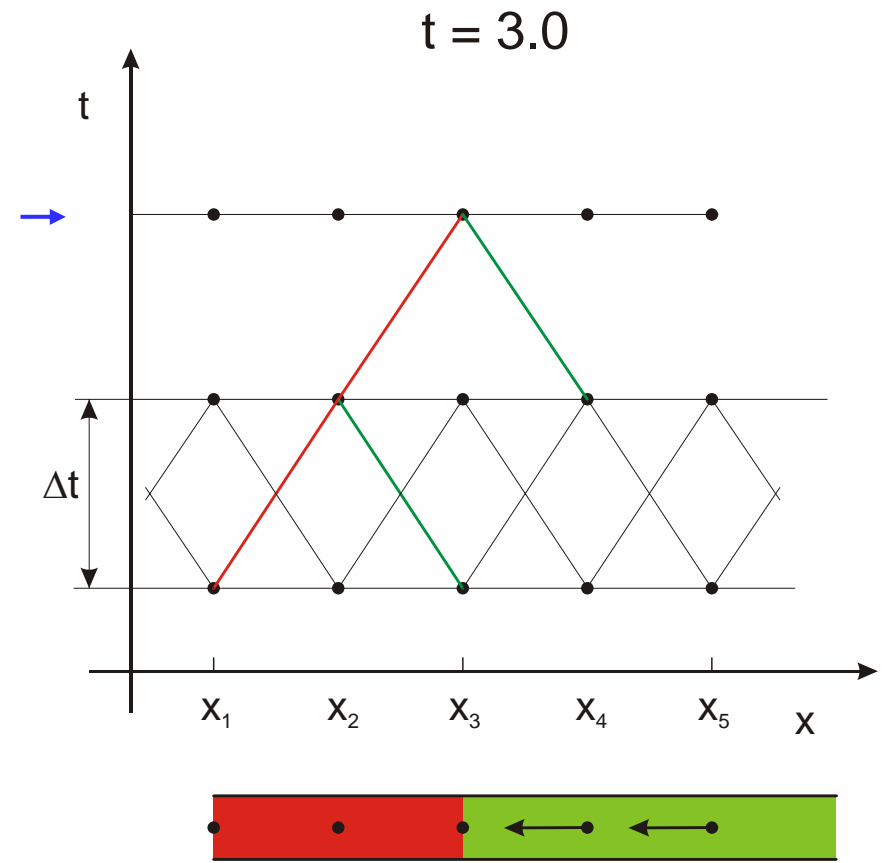
- Method for calculating new time level





# Implementation

- Method for calculating new time level



## Implementation

- Method for calculating new time level

