



Iridoglyphic complex for human functional status assessment

Darya S. Maslova
BMSTU
5-th year student

Biomedical techniques department



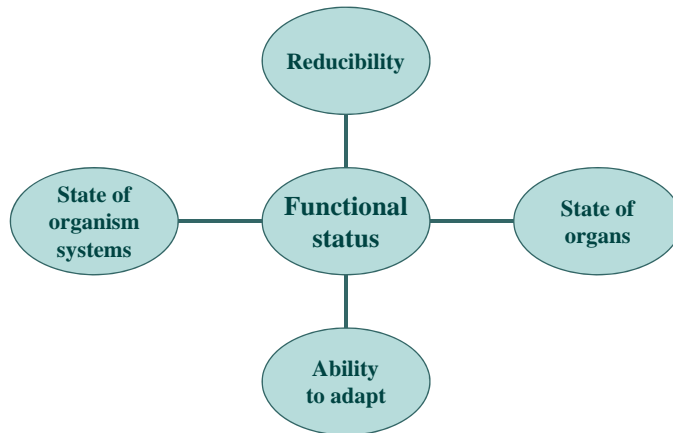
Contents

- ✓ Introduction
- ✓ Human functional status assessment
- ✓ Iridoglyphics principles
- ✓ Integral and local iris signs
- ✓ Iridoglyphics system
- ✓ Signs registration conditions
- ✓ Results and applications

Biomedical techniques department



Human functional status assessment



Biomedical techniques department



Human functional status assessment



METHODS



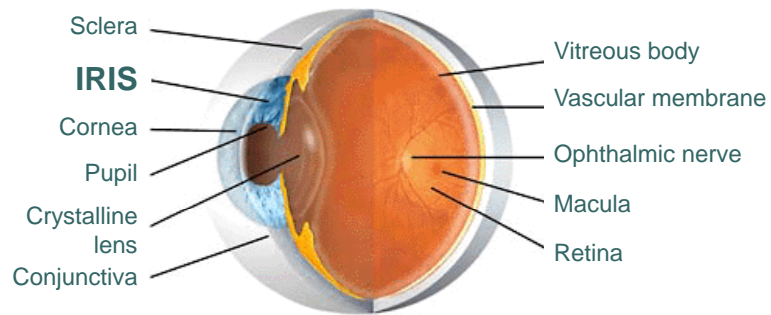
Biomedical techniques department





Iridoglyphics principles

Iridoglyphic research = Iris signs analysis



Biomedical techniques department



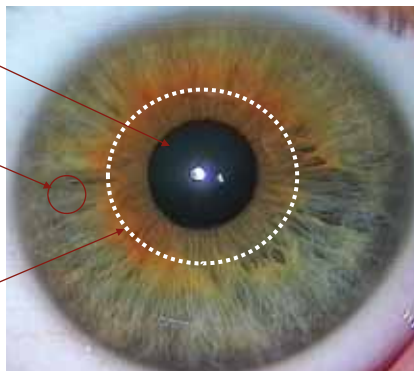
Integral iris signs

✓ Pupil state

✓ Stroma density

✓ Color

✓ Autonomous ring state



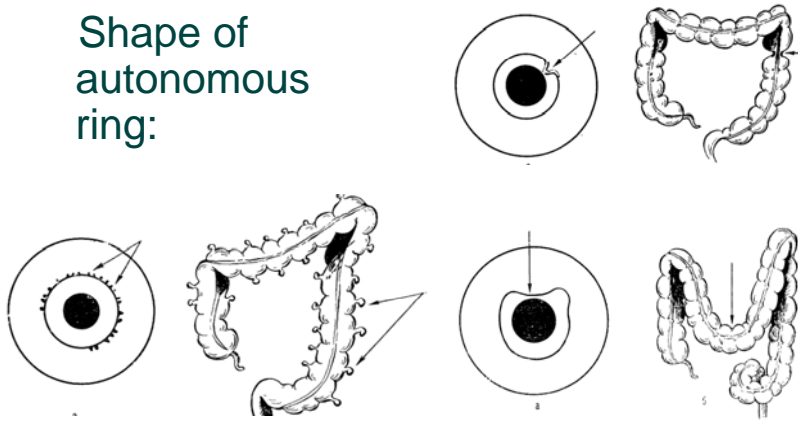
Biomedical techniques department





Integral iris signs

Shape of autonomous ring:



Biomedical techniques department



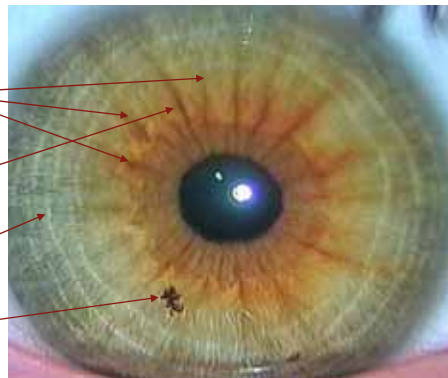
Local iris signs

✓ Lacunes

✓ Toxic radiance

✓ Stress ring

✓ Pigmented spot



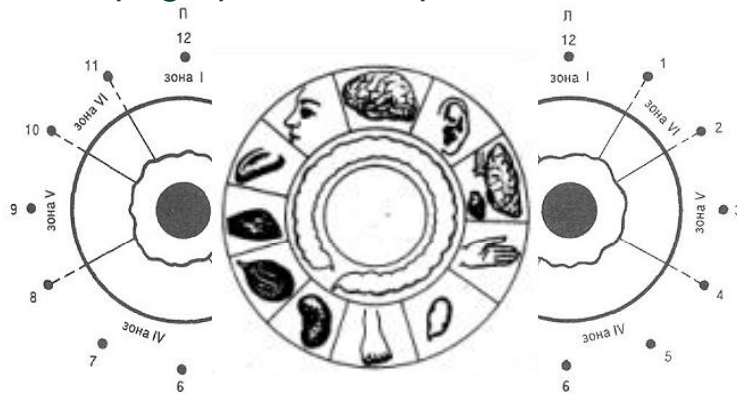
Biomedical techniques department





Local iris signs

Topographic iris map



Biomedical techniques department



Integral and local iris signs

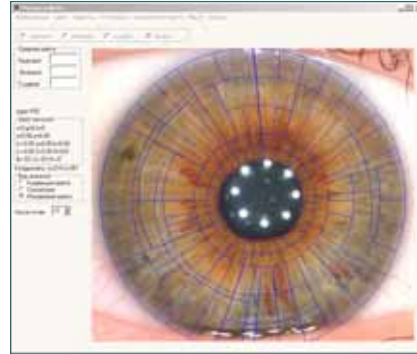
- ✓ Dimensions
- ✓ Localization
- ✓ Shape
- ✓ Structure
- ✓ Relief

Item	Symbol	Size of changes, mm
Pupil diameter	Dp	2,3..7,7
Autonomous ring diameter	Dar	3,4..9,2
Iris external diameter		9,5..13,7
Local sign's radial size	hls	-
Local sign's tangential size	Lls	-

Biomedical techniques department



Iridoglyphics system



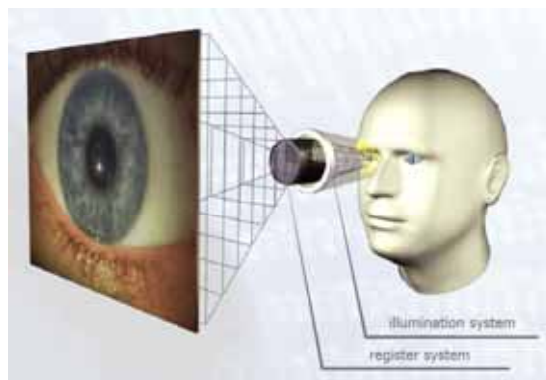
Biomedical techniques department



Iridoglyphics system



Illumination system



Biomedical techniques department





Signs registration conditions

Local contrast:
$$C = \frac{L_1 - L_2}{L_{\max}}, \quad L_1, L_2 \in [0; L_{\max}]$$

where L_1 and L_2 – brightness of image elements

Integrated contrast:

$$C_{\text{int}} = \frac{1}{2L_{\max}} \int_0^{\infty} [2(L - \bar{L}) + L_{\max} - |2(L - \bar{L}) - L_{\max}|] \cdot H(L) dL$$

where L - brightness of image elements, \bar{L} - brightness level arithmetical mean

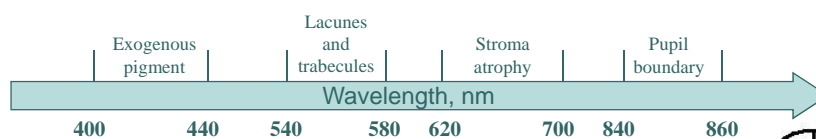
$H(L)$ - distribution bar chart of image elements brightness

Biomedical techniques department



Signs registration conditions

Measured parameter	Size of changing					
	620-700nm	568-575nm	400-450nm	White	860	910
Integrated iris contrast	0,261..0,299	0,238..0,302	0,212..0,285	0,276..0,315	0,199..0,362	0,261..0,284
Iris-sclera contrast	0,004..0,009	0,005..0,044	0,008..0,042	0,05..0,77	0,009..0,069	0,009..0,087
Pupil-iris contrast	0,07..0,053	0,017..0,048	0,049..0,109	0,019..0,085	0,012..0,068	0,062..0,092/
Lacuna-iris contrast	0,038..0,044	0,021..0,049	0,019..0,026	0,014..0,029	0,07..0,031	0,017..0,022
Pigmented spot-iris contrast	0,015..0,03	0,017..0,029	0,005..0,074	0,011..0,055	0,017..0,038	0,026..0,044



Biomedical techniques department

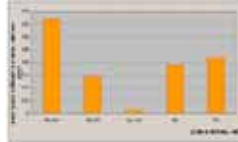




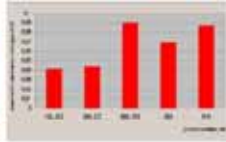
Signs registration conditions

Local contrast with illumination
in different spectral region

Pigmented spot-iris contrast



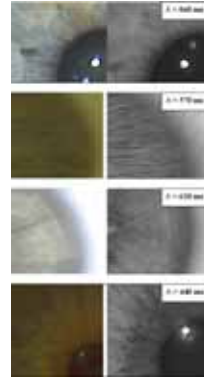
Iris-sclera contrast



Lacuna-iris contrast



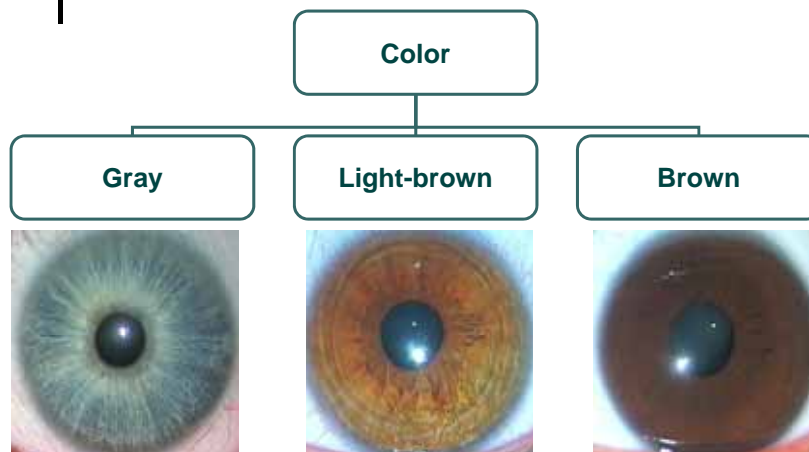
Pupil-iris contrast



Biomedical techniques department



Iris color classification

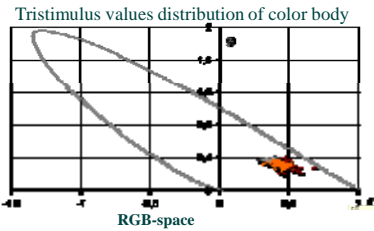
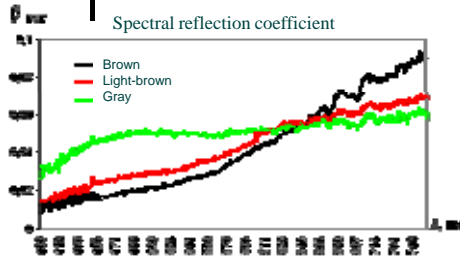


Biomedical techniques department



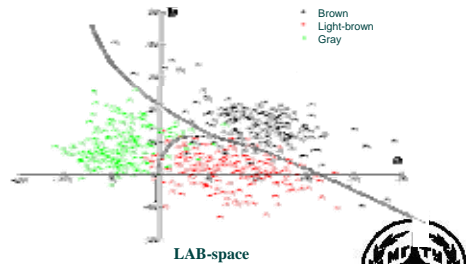


Iris color classification



Classification results: alpha and beta error probability

		Eye color		
		Brown	Light-brown	Gray
Result	1	93	5	0
	2	7	92	3
	3	0	3	94



Biomedical techniques department



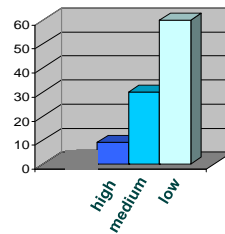
Conclusions

- Iridoglyphics research is a complex method of human functional status assessment with a glance of genetic features;
- Change of iris illumination simplifies selecting and enables to find hidden sings;
- Developed color classification enables to estimate human reparative possibilities which are important for treatment and occupational selection.

Probability of Functional status assessment coincidence

Functional status assessment	Iridoglyphics assessment (M.D. Gallimulin)		
	High	Medium	Low
High	91	9	0
Medium	8	82	10
Low	1	10	89

Disability days per 3 years for one patient



Biomedical techniques department

